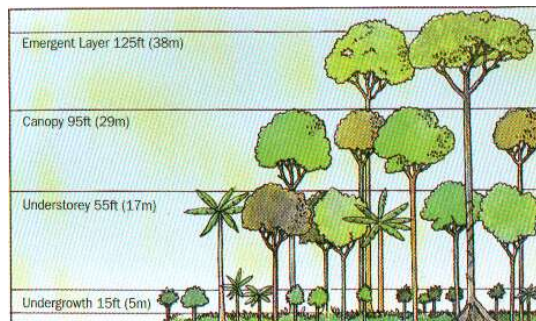


# Cathedral House Monthly

## July 2008

### There's No Place Like Home

During June we had fun diving into the deep blue ocean and seeing who calls it home. In July the children will begin to explore the Rainforests that cover our Earth. We will look through all the layers of the Rainforest. Who lives in the Emergent Layer, eagles, bats and butterflies. In the Canopy we may find snakes, toucans, and tree frogs. As we go below to the Understorey, we will discover many different insects. And the Forest Floor or Undergrowth is the home for plants and ant-eaters and other animals.



Dates to Know:

July 4 -  
School Closed

July 10 & 24 -  
Arts Alive

Reminder:

Please alert your class and the front desk of any vacation plans.

Splash Days

July 11  
July 18  
July 25

### Watermelon Festival

The city of Hempstead is celebrating the 20th Anniversary of their Watermelon Festival. Join the close to home fun, July 17th - 20th. Events include; watermelon carving, games,

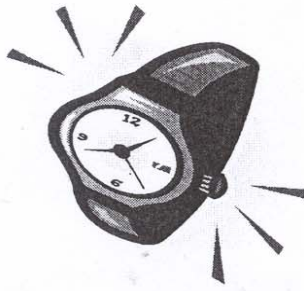
crafts, cook-offs and more.



20th Anniversary

**Directions** - The fun is easy to find! Take the Hwy 6 exit off of U.S. 290 and head south to the 1st stop light.

For more close to home adventures, pick up a copy of the Houston Family magazine or visit their web site [www.HoustonFamilyMagazine.com](http://www.HoustonFamilyMagazine.com)  
Also check out [www.tourtexas.com](http://www.tourtexas.com)



## It's TIME for a new playground!

Help us kick off our *"Pennies for Playground"* campaign by bringing in all of your watches that need new batteries and *Worth The Weight Jewelry* will change them while you work! 50% of all proceeds from your watch batteries will go towards our *"Pennies for Playground"* campaign.

**Cost?** \$10.00 per battery - \$5.00 of which will go directly to *"Pennies for Playground"*

**How?** From July 7<sup>th</sup> through December 12<sup>th</sup>, simply drop off your watch in a *Worth The Weight* envelope at the front desk. Sarah Swagerty, Jonathan & Mason's mom, will pick up and deliver your watch the same day\* and will have it at the front desk for you to pick up. It can't get any easier than that!

**Who can participate?** Anyone! Bring in your friend's watch, your co-worker's watch, your cousin's watch...we need all of the watches we can get to pay for our new state of the art playground!

**What kind of watches?** Any kind!\* *Worth The Weight* changes watch batteries in all brands with no problem.

Please make all checks payable to *Worth The Weight*.

\*Dive watches that require pressure testing will take one week and cost \$30.00 - \$50.00 depending on the model.



## Your Help and Patience is Appreciated

Morning arrivals can become hectic. Thank you for your patience as families drop off. We have peak arrival times, one minute there many empty spaces and the next there are none.

Helpful hints:

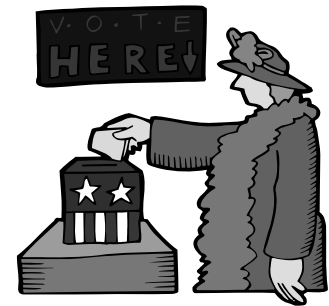
- For the safety of all, the officers will ask you to circle the block. If there are no cars backing out, we can not block a lane of traffic.
- Use your turn signal when approaching to alert officers and those behind you that you will be parking.
- Please be mindful of the other families waiting to park while inside the building.
- Park on Texas if you are pressed for time or wanting to stay for a longer visit.



*Our 2008/2009 Cathedral House PTO Officers*

*We Proudly  
Announce*

- President - Mary Marten
- Vice President - Stacy Little
- Secretary - Amanda Peterson
- Treasurer - Wendy Foltz
- Events Coordinator - Priya Coffey



## What's Happening at the Rice Children's Campus?



The opening day of August 25th is fast approaching. Many Rice families have toured Cathedral House to get a sense of how the new program will look and feel. Although the building will look different, our plan is to replicate Cathedral House as much as possible. We would like to thank all our families for making our new teachers feel welcome as the plan for the Rice teams of teachers begins to take shape.



---

# Classroom News

## Movement I:

In June we did lots of fun things. We made sunshine and fish art, celebrated our dads (and grandpas), and splashed! Our kiddos really enjoy getting into the water and making a great big mess. Speaking of making a big mess...you should see us when we eat our special Friday snack of popsicles! Joining us for our Friday (and everyday) fun were, Trace Murphree and Charlotte Davis (Kinsey's little sister). Other new faces in Movement I this month are Ms. Tasha, and Ms. Nelma. They will be filling in while Ms. Opal is on maternity leave. In case you didn't see the sign, Ms. Opal welcomed her son Alan Reis, 5 lbs 18" on June 22, 2008. We are proud to announce our latest accomplishments; Christopher, Julian, and Max are WALKING!



## Movement II:

In the month of June we explored the ocean. Have you seen the nice aquariums the children made? Along with the pretty art work, our shelves have been getting a facelift. Ms. Erendira Villagoz has join us and is helping us create new Montessori lessons for the children. We are all very excited to have her in the Movement department. Joining us from Movement I during the month of June were Annalise Bash, Claire Neslage, Catherine Pfeiffer, and Brendan Storey. We also welcomed Grant Gilbert and his family to Movement II and Cathedral House. Growing up to join Toddler I were Hazel Britton Dansby, Oliver Seitchik, and Maya Madraimov. *There's No Place Like Home* in the Rainforest. During July we will see who makes the Rainforest home.



## Montessorians in the Making

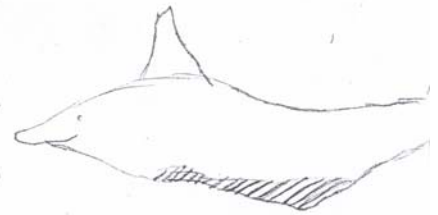
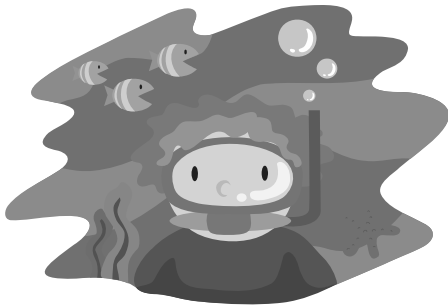
During the month of June, Ms. Myriam and Ms. MaryLou attended the National Center for Montessori Education. They are well on their way to becoming certified Montessori Directresses.

---

# Classroom News

Kindergarten:

The children were all happy that June finally began. They could hardly wait for the first Friday and have Splash Days start. While exploring the home of the oceans, we learned lots of new facts on fish and did many fun activities. Our vocabulary was expanded with new words like *translucent*. Look at the beautiful report by Harrison. His drawing of the Bottlenosed Dolphin is awesome. During June, the Kindergarten class welcomed new and old faces. Savannah Barloco graduated from Primary and Emily Primm, Ben Kugler, Harrison Garrett, Avery Harrison, and Gillian Holloway returned for the Summer months. It has been fun having them all here! Erik Achtermann will be leaving Cathedral House this month. He will be spending an exciting vacation on the continent of Europe, learning about Germany with hands on experience. His family has been a part of Cathedral House for a 11 years and we will miss them all.



Bottlenose Dolphin

The most frequently seen dolphin, colored grayish-black above and white below. Found in warm seas around the world, generally within 10 miles of land. Grow to 10-12 feet long and weigh up to 450 pounds. They feed on fish.

# July Birthdays

July 3rd Jane Espeseth 1 year old  
July 6th Alexandria Tripp 4 years old  
July 15th Luke Summer 5 years old  
July 20th Patrick Farmer 4 years old  
July 22nd Ben Beauvais 2 year old  
July 27th Ryan Dorfman 4 years old  
July 28th ★ Ethan Cloud 4 years old★

## Also Celebrating in July

Ms Tameka July 1st Administration

Ms. Opal July 2nd Movement I

Ms. Tasha July 6th Floater

Ms. Alicia July 21st Nursery I

Ms. Angel July 29th Nursery II

